

LINEL 

Brise Soleil Fixed Sunshades



IntelligentEnvelopes™

Introduction

Linel is headquartered in Mooresville, Indiana and is part of the Mestek Architectural Group. In addition to Linel, Mestek's architectural activities include American Warming and Ventilating (AWV). The emphasis for these companies is in providing products and systems that beautify and improve the performance of buildings through Intelligent Envelopes™.



The purpose of Brise Soleil fixed sunshades is to give the architect aesthetic flexibility to beautify the building's appearance, while providing a degree of solar shading. Linel offers an extraordinary range of Brise Soleil fixed sunshades in a variety of shapes, finishes, mounting arrangements for a dramatic aesthetic effect.

LINEL'S OFFERING

- Aesthetically Pleasing – Linel Brise Soleil fixed sunshades are designed with aesthetics foremost in mind.
- Reduced Energy Costs – Linel Brise Soleil fixed sunshades provide a degree of solar shading reducing cooling loads and energy costs.
- Wide Range – Linel Brise Soleil fixed sunshades are available in a wide variety of shapes, patterns and sizes for the blades or in-fill panels, outriggers and fascia styles.
- Durability – Virtually maintenance-free light weight extruded aluminum construction. Linel can provide certified structural calculations when requested to ensure sunshade structural integrity. Linel Brise Soleil fixed sunshades are typically manufactured using non-welded construction, but welded construction can also be provided if desired.

LINEL'S TRACK RECORD AND CAPABILITIES

Linel has more than 30 years of experience in the design and supply of Brise Soleil fixed sunshades. Linel's portfolio with thousands of successful projects include some of the largest, most complex Brise Soleil fixed sunshades in both new and renovation applications.

Linel is dedicated to innovation and has comprehensive design capabilities. While this brochure provides a general overview of our capabilities, we welcome the opportunity to develop solutions to satisfy your unique requirements.

MATERIAL ONLY OR TURNKEY INSTALLATIONS

Every Linel project is assigned a project manager who coordinates activities with the architect, general contractor and installer, as well as internally with engineering and manufacturing. Linel can provide the structures as a material only contract, or installed as a turnkey solution.



It is important to remember that while there are several companies that offer Brise Soleil fixed sunshades, the outcome largely depends on the rigorous engineering, state-of-the-art manufacturing, attention to detail, experience and close coordination with everyone involved in the project. For the most demanding and complex projects, you can depend on Linel's experience and expertise.



SPECIFYING YOUR SUNSHADE

Specifying Brise Soleil fixed sunshades has never been easier. Simply select the blades/ infill grille or panel, outriggers, fascia and options.

To begin the section, chose either the blades or infill grilles/panels.

Choose Blades

- Blade style and width size
- Number of blades
- Blade mounting angle (i.e. 90 degrees is horizontal, 45 degrees is up, 135 degrees is down).

OR

Choose Infill Grille/Panels

- Grille or panel style

Choose Outriggers

- Outrigger projection depth, style and spacing along the length of the sunshade.
- Outrigger mounting angle (i.e. 90 degrees is horizontal, 45 degrees is up, 135 degrees is down).
- Outrigger height at building façade and at end.

Choose Fascia (if any)

- None – The sunshade will be terminated with the last blade.
- Fascia style and size

Choose Downrigger (if any)

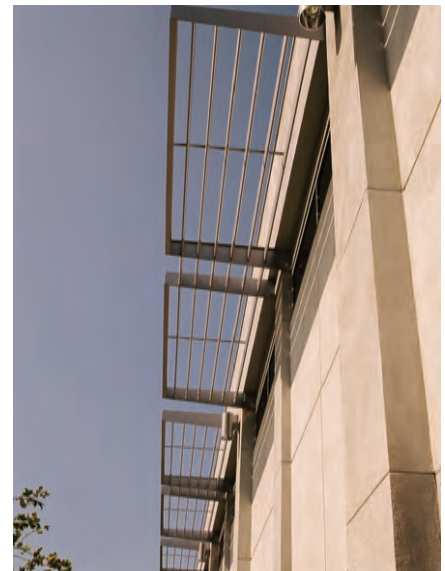
- Mounting height above sunshade

Choose Overall Length

Choose Finish

Choose Special Options

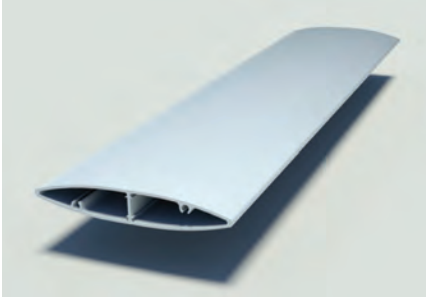
- Inside mitered corners (specify angle)
- Outside mitered corners (specify angle)
- Curved (specify radius)



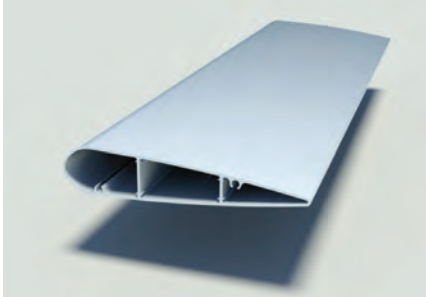
Choose Your Styles

BLADE STYLES AND SIZES

Full Airfoil – 2-12" widths in 1" increments, plus larger widths up to 24" in 4" increments



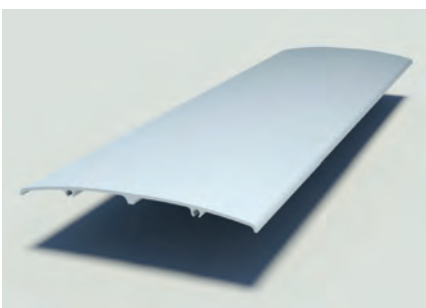
Tear Drop – 4-10" widths in 1" increments



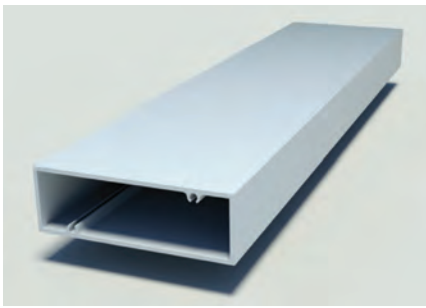
Round – 1-12" diameters in 1" increments



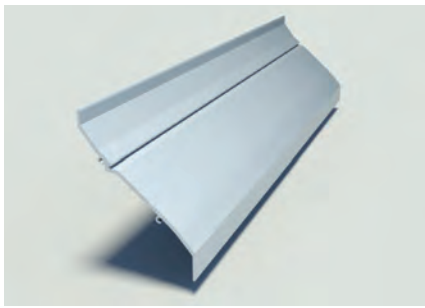
Half Airfoil – 6-12" widths in 1" increments



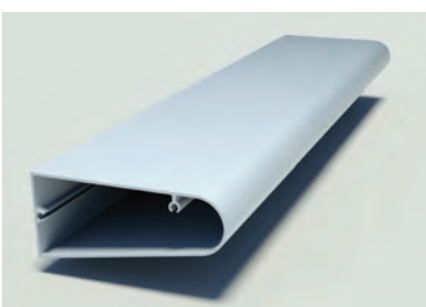
Rectangular Tube – 1-8" widths in 1" increments



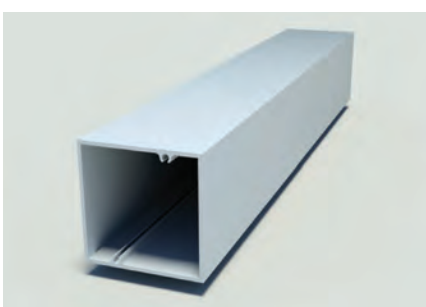
Louver – 2-8" width in 1" increments



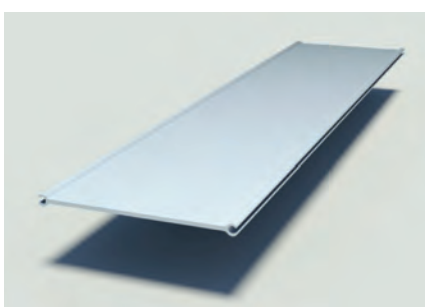
Wedge – 4-10" widths in 1" increments



Square – 1' x 1"- 6" x 6" in 1" increments

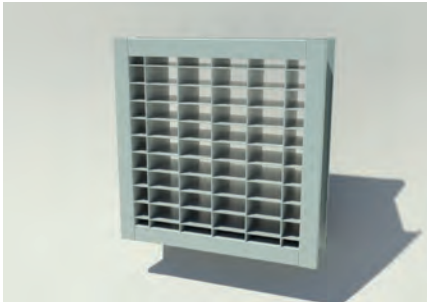


Flat – 4-8" widths in 1" increments

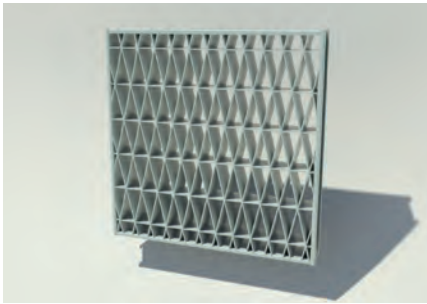


INFILL GRILLES

Instead of using blades, in-fill grilles are available in a variety of patterns.
Egg Crate in varying dimensions



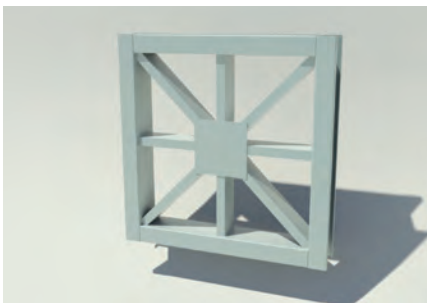
Lattice in varying dimensions



Double Lattice in varying dimensions

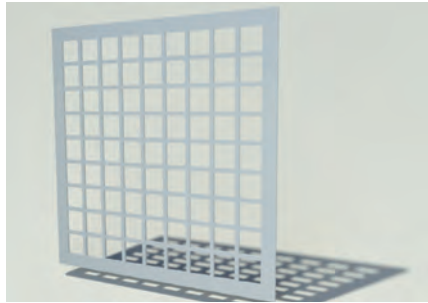


Starburst in varying dimensions



INFILL PERFORATED PANELS

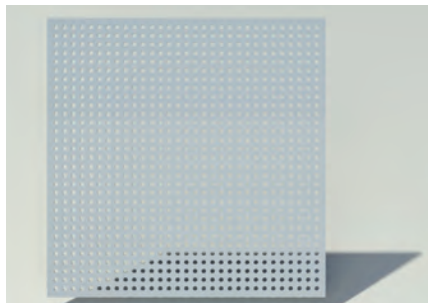
In-fill perforated panels are also available.
Square holes, straight centers in varying dimensions



Round holes, 60° staggered centers in varying dimensions



Round holes, straight centers in varying dimensions

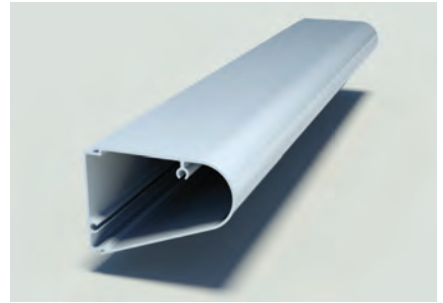


Slotted holes, staggered centers in varying dimensions

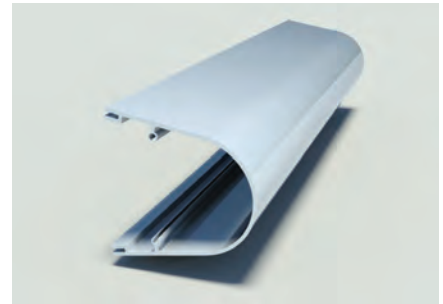


FASCIA STYLES AND SIZES

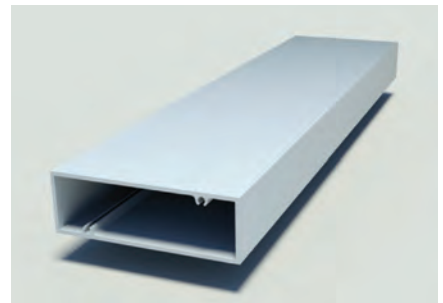
The sunshade's last blade can terminate the sunshade or with a fascia shape including:
Wedge – 4-10" widths in 1" increments



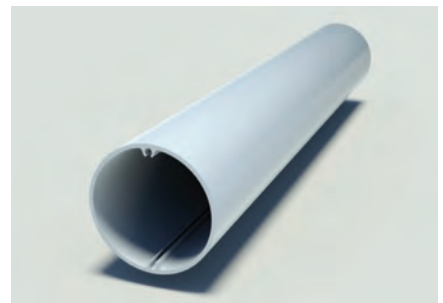
Bullnose – 4-10" widths in 1" increments



Rectangular – 1-8" widths in 1" increments



Round – 1-12" diameters in 1" increments



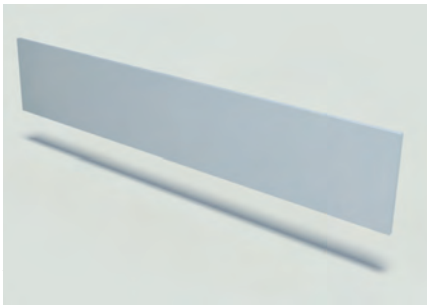
Choose Your Styles

OUTRIGGER STYLES AND SIZES

The blades and fascia are supported by outriggers mounted to the building's façade. An unlimited number of sizes and shapes are available. The following are a sampling.

Standard projection depths up to 48 inches. Larger projection depths can be accommodated, but require additional engineering.

Rectangular in varying dimensions



Rounded in varying dimensions



Curved in varying dimensions



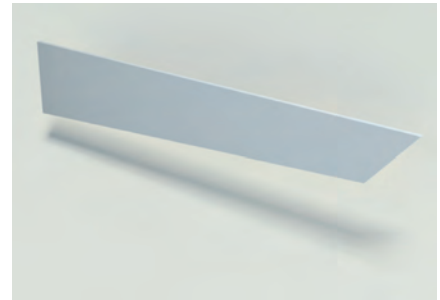
Bullnose in varying dimensions



Sloped in varying dimensions



Wedge in varying dimensions



Profiled in varying dimensions

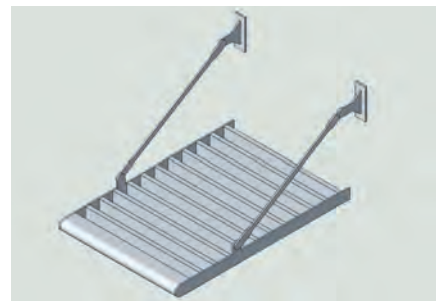


Tapered in varying dimensions



DOWNRIGGERS

Downriggers are normally threaded rods attached to the building façade through a mounting bracket located above the sunshade and attached to the end of the sunshade.



LINEL 



Choose Your Styles

STANDARD FINISHES

Linel Brise Soleil fixed sunshades can be provided in mill, anodized, baked enamel, PVDF (aka Kynar) and other special finishes. Linel is a licensed applicator for Akzo Nobel, PPG and Valspar to meet AAMA painting (2603, 2604 & 2605) specifications. Elements as large as 30" W x 66" H x 34 feet L can be accommodated in our paint line – one of the largest profile capable systems in the country.

Clear anodizing provides a uniform satin finish that resists oxidation. The 204R1 clear provides a 0.4 mil coating, while the 215R1 clear provides a 0.7 mil coating for extra corrosion and abrasion resistance. Color anodizing is also available in light, medium, dark bronze or black in a 0.7 mil coating.

PVDF (aka Kynar) is a baked-on finish made of 70% PVDF resins and durable ceramic pigments that meets AAMA2605 specifications. PVDF is unsurpassed in its resistance to color fading and chalking from the damaging ultraviolet rays of the sun. It is resistant to general air pollution and will not whiten or pit when exposed to the elements.

PVDF finishes are available in a wide range of colors and glosses. Metallic, pearlescent and other more exotic formulations are also available. Special color matching can also be provided by our in-house computerized paint color formulating system.

CUSTOM FINISHES

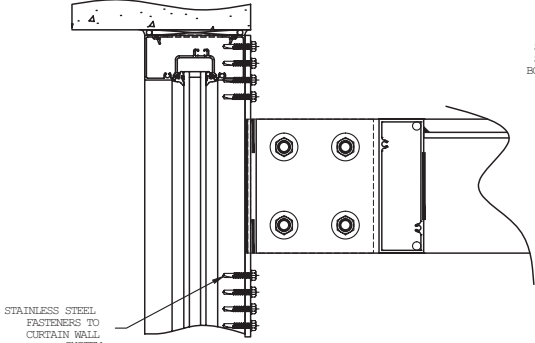
While Brise Soleil fixed sunshades are typically constructed of extruded aluminum, special appearances can be provided through a dye-sublimation process to turn ordinary materials into a work of art. We transform the aluminum to look identical to wood grain, marble, granite, masonry, carbon fiber or any creative digital design to give your project a unique signature appearance.





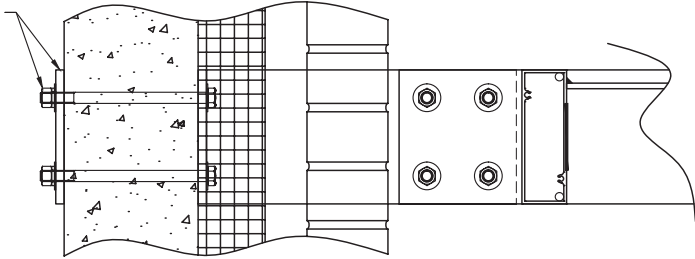
Choose Your Styles

MOUNTING METHODS



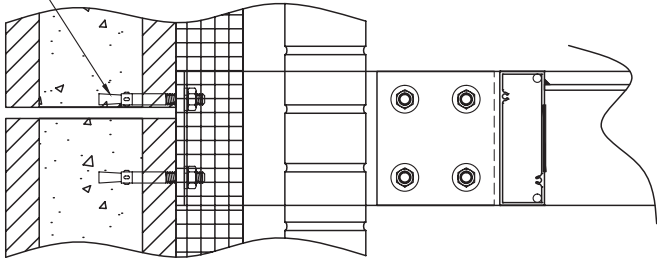
TYPICAL SUNSHADE TO CURTAIN WALL INSTALLATION

STEEL PLATE AND STAINLESS STEEL BOLTS TO MASONRY WALL SYSTEM.



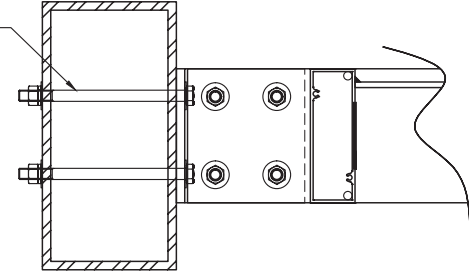
TYPICAL SUNSHADE TO MASONRY INSTALLATION

STAINLESS STEEL ANCHORS TO PRE-CAST WALL SYSTEM.



TYPICAL SUNSHADE TO PRE-CAST INSTALLATION

STAINLESS STEEL BOLTS TO STEEL TUBE WALL SYSTEM



TYPICAL SUNSHADE TO STEEL SUPPORT INSTALLATION





MESTEK

ARCHITECTURAL

IntelligentEnvelopes™

101 Linel Drive, Mooresville, IN 46158 317.831.5314 P 317.831.9260 F